



Grand Rapids, Michigan, U.S.A. 49504-5298

USER'S OPERATING AND INSTRUCTION MANUAL

MODEL 2218

ROTARY ACCUMULATOR



ROTARY ACCUMULATOR

INDEX

<u>Section Description</u>	<u>Document No.</u>	<u>Page No.</u>
SAFETY INSTRUCTIONS -----	2218S20002 -----	1-1
DESCRIPTION/SPECIFICATIONS -----	2218S20003 -----	2-1
Description -----		2-1
Specifications -----		2-2
INSTALLATION INSTRUCTIONS -----	2218S20004 -----	3-1
Accumulator Installation -----		3-1
OPERATING INSTRUCTIONS -----	2218S20005 -----	4-1
TROUBLESHOOTING -----	2218S20006 -----	5-1
The Accumulator Will Not Start (Motor is Not Humming) -----		5-1
The Accumulator Will Not Start (Motor is Humming) -----		5-1
MAINTENANCE -----	2218S20007 -----	6-1
Removing the Rotary Table -----		6-1
Replacing the Rotary Table -----		6-1
Cleaning -----		6-1
REPLACEMENT PARTS SECTION		
MAIN FRAME -----	2218S20008 -----	7-1
Drawing -----		7-1
Parts List -----		7-2
TABLE AND COVERS -----	2218S20009 -----	8-1
Drawing -----		8-1
Parts List -----		8-2
ELECTRICAL -----	2218S20010 -----	9-1
Drawing -----		9-1
Parts List -----		9-2
WIRING DIAGRAM 1-60-115 -----	2218S20011 -----	10-1
WARRANTY -----	GEN 040225	
WARRANTY PROCEDURE -----	GEN 040226	
RETURNED PARTS POLICY -----	GEN 040227	



ROTARY ACCUMULATOR

SAFETY INSTRUCTIONS

WARNING

VARIOUS SAFETY DEVICES AND METHODS OF GUARDING HAVE BEEN PROVIDED ON THIS MACHINE. IT IS ESSENTIAL HOWEVER THAT THE MACHINE OPERATORS AND MAINTENANCE PERSONNEL OBSERVE THE FOLLOWING SAFETY PRECAUTIONS. IMPROPER INSTALLATION, MAINTENANCE, OR OPERATION OF THIS EQUIPMENT COULD CAUSE SERIOUS INJURY OR DEATH.

1. Read this manual before attempting to operate your machine. Never allow an untrained person to operate or service this machine.
2. Connect the machine to a properly grounded electrical supply that matches the requirements shown on the electrical specification plate and follow all specifications of local electrical codes.
3. Disconnect and lock-out the machine from the power supply before cleaning or servicing.
4. Check and secure all guards before starting the machine.
5. Observe all caution and warning labels affixed to the machine.
6. Use only proper replacement parts.
7. Do not wear loose fitting clothing or loose hair when working near this machine. Shirt tails should be tucked in.
8. Wear proper, personal, protective, safety equipment.
9. Keep Hands away from the moving parts of this machine while it is in operation.
10. In addition to these general safety instructions, please follow the more specific safety instructions in the rest of this operating instruction manual.

WARNING

DO NOT USE FOR OTHER THAN ORIGINALLY INTENDED PURPOSE.



ROTARY ACCUMULATOR

DESCRIPTION/SPECIFICATIONS

Description

The Oliver Model 2218 Rotary Accumulator is of a compact, sturdy, design. The machine is easy to operate and It's design will provide years of efficient, trouble-free operation requiring a minimum of maintenance. This Rotary Accumulator is designed to catch packages exiting a conveyor type packaging machine.

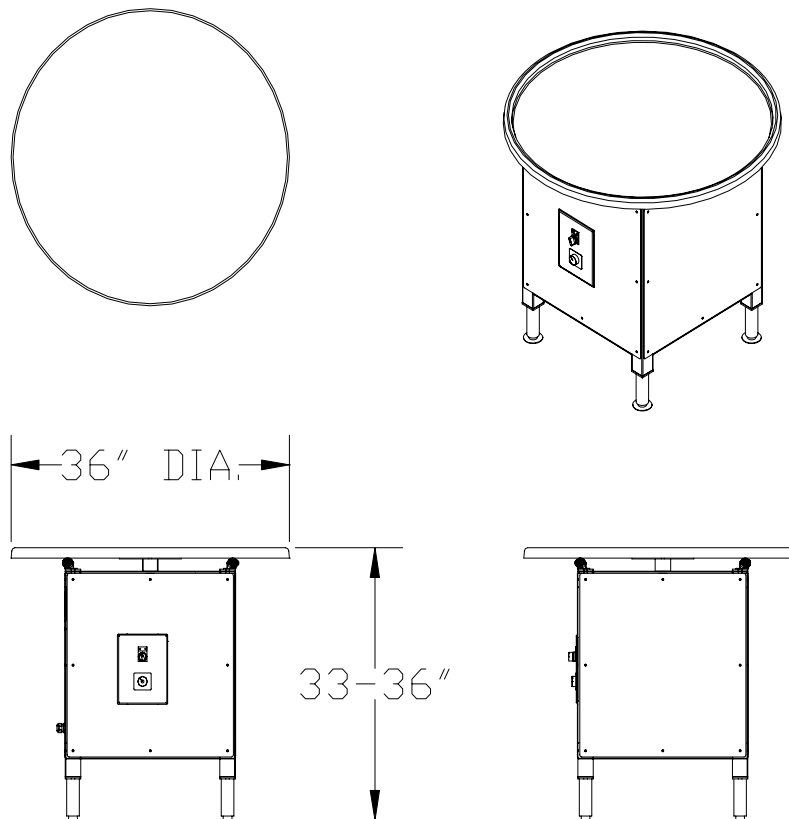
The Model 2218 Rotary Accumulator is made of stainless, plated, and painted steel, and food grade plastic construction for easy cleaning and maintenance.

Oliver Packaging & Equipment Company, who has a reputation of serving the Baking Industry for over 70 years, backs these accumulators.

Specifications

Space Requirements:

2218 (All Dimensions are Approximate)





ROTARY ACCUMULATOR

Product Capacities:

Table is designed to support up to 25lbs. of product at a time.

Standard Electrical Options: (Others consult factory).

1 phase, 60 hz, 115VAC, 2 Amps.

Standard Table sizes,

36" (inches)

Shipping Weight

175 lbs. (approximate)

Net Weight

125 lbs. (approximate)



ROTARY ACCUMULATOR

INSTALLATION INSTRUCTIONS

Accumulator Installation:

Before starting the Installation process make sure you observe the following caution note.

CAUTION

**THE SLICER IS HEAVY, USE PROPER TECHNIQUE WHEN LIFTING.
KEEP BACK STRAIGHT, KNEES BENT, AND LIFT WITH LEGS.
USE GLOVES TO PROTECT HANDS.**

Select a location for your accumulator which has electrical service compatible with the load the machine will place on it as indicated on the electrical data plate of the machine.

Position the machine while it is still in its packaging as close as possible to the desired end location. Expose the machine by removing the outer packaging. Using at least two people, (one in the front and one at the back of the machine), lift the accumulator from the resting surface of the packaging and set the machine onto floor as close as possible to the desired end location. Make final location adjustments by sliding the machine to its desired location. Adjust the legs to obtain the appropriate height.



ROTARY ACCUMULATOR

OPERATING INSTRUCTIONS

WARNING

TABLE ROTATES.

To operate the accumulator, rotate the selector switch to ON "I" position. Table speed can be varied by use of the speed control knob located below the ON/OFF selector switch.

CAUTION

BE SURE TABLE OF ACCUMULATOR DOES NOT RUB ON ADJACENT MACHINERY OR CARTS.



ROTARY ACCUMULATOR

TROUBLE SHOOTING

WARNING

ALWAYS DISCONNECT THE ACCUMULATOR FROM THE POWER SUPPLY BEFORE ATTEMPTING ANY TYPE OF MAINTENANCE TASK, INCLUDING TROUBLESHOOTING.

The Accumulator Will Not Start (Motor Is Not Humming)

- The machine is not plugged in.
- There is no power at the outlet. (Check by plugging in a small working appliance, like a lamp. Check to see if a circuit breaker has tripped. If the circuit breaker has not tripped and the circuit is still not working have a qualified electrician check the circuit.)
- The ON/OFF switch is in the off "0" position. Turn the selector switch to the on "I" position.
- The speed may be set too low. Turn the speed control clockwise to increase table speed.
- The problem is somewhere else in the electrical system of the machine. (Have a qualified electrician find and repair the problem.)

The Slicer Will Not Start (Motor Is Humming)

CAUTION

**DO NOT ALLOW THE MOTOR TO HUM WITHOUT STARTING.
OVERHEATING CAN PERMANENTLY DAMAGE THE MOTOR.**

- The drive system is binding. (Have a qualified service agent check for defective bearings or other restrictions to free movement.)
- There is mechanical interference between other parts of the accumulator. (Have a qualified service agent evaluate the machine for adjustment or replacement of defective parts.)
- The motor has failed. (Have it checked by a qualified electrician.)



ROTARY ACCUMULATOR

MAINTENANCE

Removing The Rotary Table

WARNING

ALWAYS UNPLUG THE ACCUMULATOR BEFORE PERFORMING ANY TYPE OF MAINTENANCE TASK.

To remove the rotary table, pull straight up and off. To replace the rotary table, line up the square tube on the bottom of the table with the square drive hub on the motor and carefully lower into position. The table should contact the four supporting rollers if properly installed.

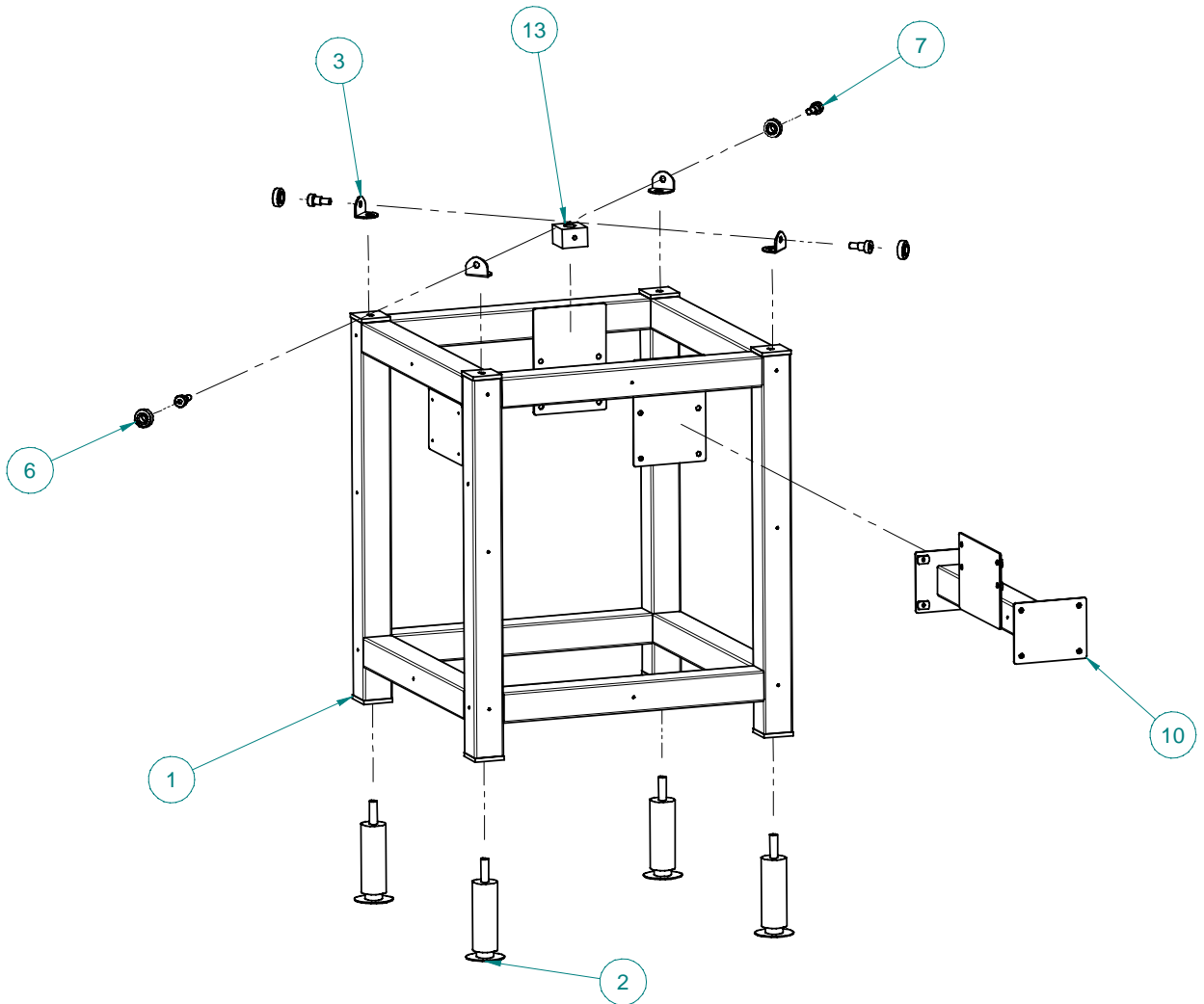
Cleaning

Use a mild detergent solution to clean the exterior surfaces daily or as necessary.



ROTARY ACCUMULATOR

MAIN FRAME



FOR SERVICE PARTS CALL OLIVER PACKAGING & EQUIPMENT @ 800-253-3893



ROTARY ACCUMULATOR

MAIN FRAME PARTS LIST

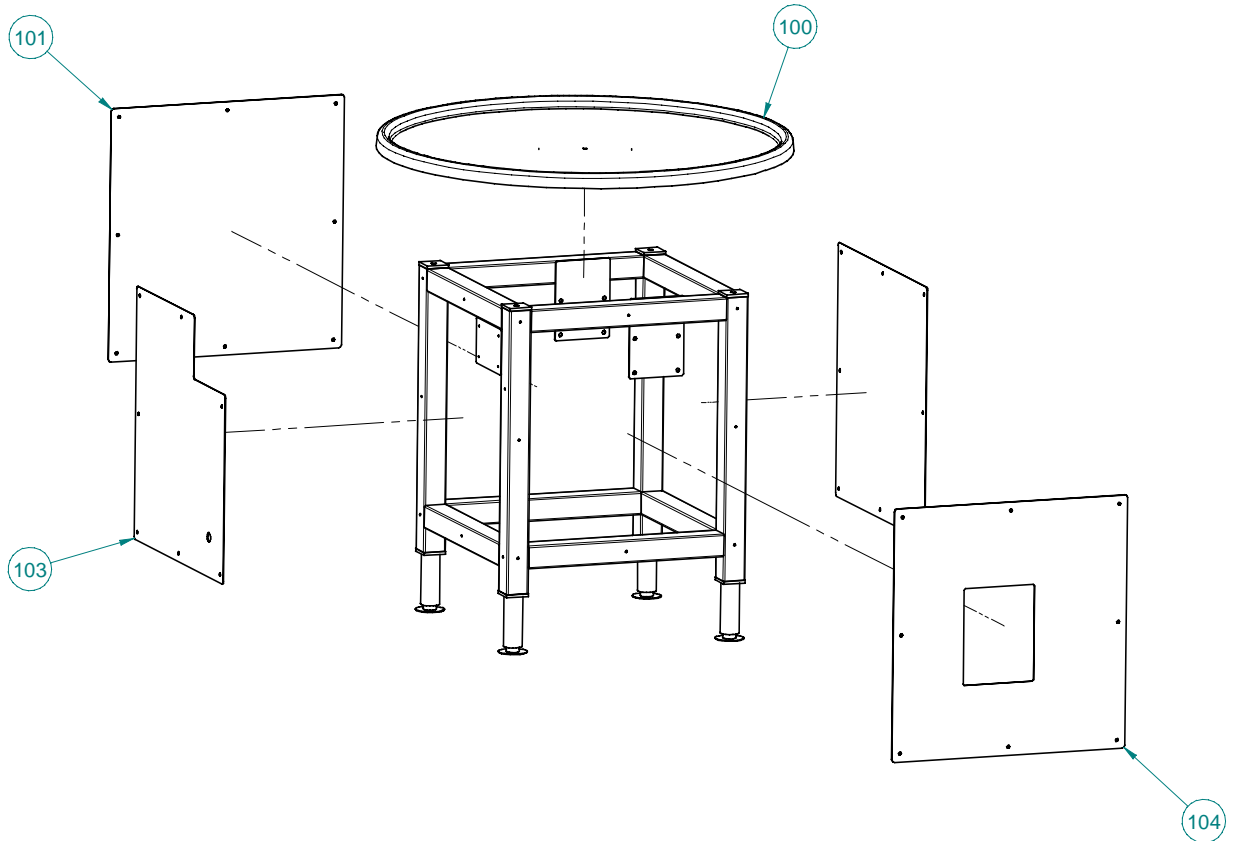
<u>ITEM NO</u>	<u>PART DESCRIPTION</u>	<u>PART NUMBER</u>
001	Frame	2218-0001
002	Leg-Adjustable	5912-0512
003	Bracket-Wheel	2218-0006
006	Roller	69958
007	Screw-Shoulder	5842-8950
010	Mount-Motor	2218-0002
013	Block-Drive	2218-0004

FOR SERVICE PARTS CALL OLIVER PACKAGING & EQUIPMENT @ 800-253-3893



ROTARY ACCUMULATOR

COVERS



FOR SERVICE PARTS CALL OLIVER PACKAGING & EQUIPMENT @ 800-253-3893



Oliver Packaging & Equipment Company
511 Sixth Street NW • Grand Rapids, MI 49504

(800) 253-3893
www.oliverquality.com

ROTARY ACCUMULATOR

COVERS PARTS LIST

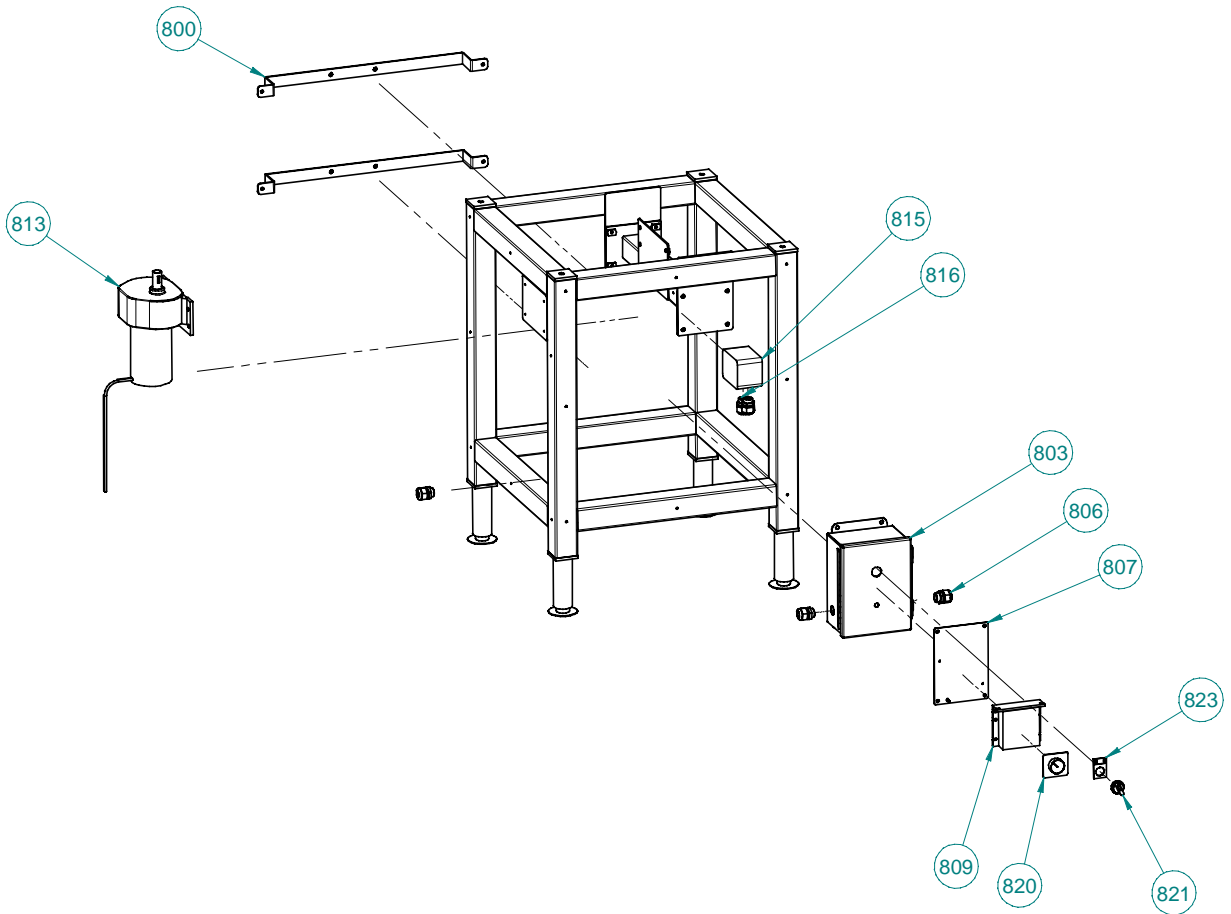
<u>ITEM NO</u>	<u>PART DESCRIPTION</u>	<u>PART NUMBER</u>
100	Table-Rotary 36"	2218-0012
101	Cover	2218-0007
103	Cover-Side	2218-0008
104	Cover-Front	2218-0009

FOR SERVICE PARTS CALL OLIVER PACKAGING & EQUIPMENT @ 800-253-3893



ROTARY ACCUMULATOR

ELECTRICAL ASSEMBLY



FOR SERVICE PARTS CALL OLIVER PACKAGING & EQUIPMENT @ 800-253-3893



ROTARY ACCUMULATOR

ELECTRICAL PARTS LIST

<u>ITEM NO</u>	<u>PART DESCRIPTION</u>	<u>PART NUMBER</u>
800	Bracket-Mounting	2218-0005
803	Box-Electrical	2218-0011
806	Bushing-Strain Relief	5765-1120
807	Panel-Sub	2218-0010
809	Control-DC Drive	6309-6010
*810	Resistor-Control	6309-6014
813	Gearmotor-90VDC	6310-0026
815	Enclosure-Polycarb	5720-4807
816	Bushing-Strain Relief	5765-1121
820	Dial and Knob Kit	6309-6035
821	Operator-Selector	5708-7934
*822	Block-Mounting/Contact	5708-7930
823	Plate-Legend Off/On I/O	6401-5102

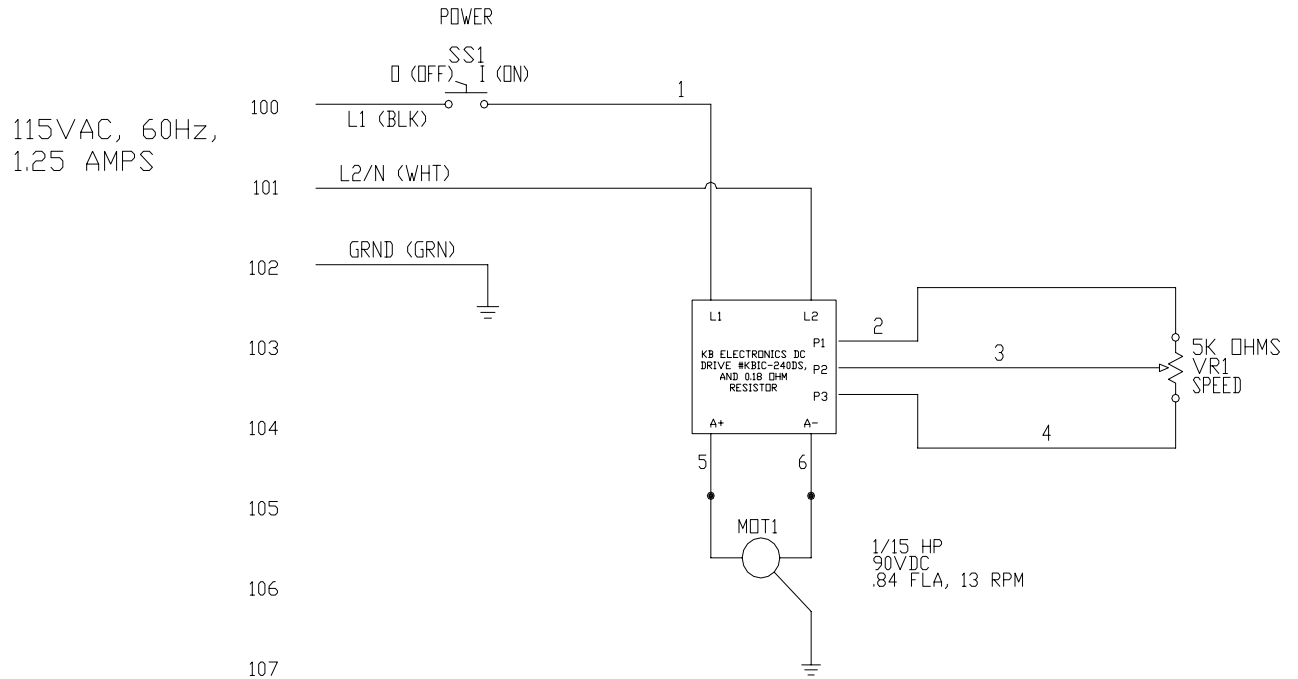
* Items not shown

FOR SERVICE PARTS CALL OLIVER PACKAGING & EQUIPMENT @ 800-253-3893



ROTARY ACCUMULATOR

ELECTRICAL DIAGRAM 1/60/115



LAST NUMBER USED: 6

FOR SERVICE PARTS CALL OLIVER PACKAGING & EQUIPMENT @ 800-253-3893



WARRANTY

PARTS

Oliver Packaging & Equipment Company (Oliver) warrants that if any part of the equipment (other than a part not manufactured by Oliver) proves to be defective (as defined below) within one year after shipment, and if Buyer returns the defective part to Oliver within one year, Freight Prepaid to Oliver's plant in Grand Rapids, MI, then Oliver, shall, at Oliver's option, either repair or replace the defective part, at Oliver's expense.

LABOR

Oliver further warrants that equipment properly installed in accordance with our special instructions, which proves to be defective in material or workmanship under normal use within one (1) year from installation or one (1) year and three (3) months from actual shipment date, whichever date comes first, will be repaired by Oliver or an Oliver Authorized Service Dealer, in accordance with Oliver's published Service Schedule.

For purposes of this warranty, a defective part or defective equipment is a part or equipment which is found by Oliver to have been defective in materials workmanship, if the defect materially impairs the value of the equipment to Buyer. Oliver has no obligation as to parts or components not manufactured by Oliver, but Oliver assigns to Buyer any warranties made to Oliver by the manufacturer thereof.

This warranty **does not** apply to:

1. Damage caused by shipping or accident.
2. Damage resulting from improper installation or alteration.
3. Equipment misused, abused, altered, not maintained on a regular basis, operated carelessly, or used in abnormal conditions.
4. Equipment used in conjunction with products of other manufacturers unless such use is approved by Oliver Products in writing.
5. Periodic maintenance of equipment, including but not limited to lubrication, replacement of wear items, and other adjustments required due to installation, set up, or normal wear.
6. Losses or damage resulting from malfunction.

The foregoing warranty is in lieu of all other warranties expressed or implied AND OLIVER MAKES NO WARRANTY OF MERCHANTABILITY OR FITNESS FOR PURPOSE REGARDING THE EQUIPMENT COVERED BY THIS WARRANTY. Oliver neither assumes nor authorizes any person to assume for it any other obligations or liability in connection with said equipment. OLIVER SHALL NOT BE LIABLE FOR LOSS OF TIME, INCONVENIENCE, COMMERCIAL LOSS, INCIDENTAL OR CONSEQUENTIAL DAMAGES.



Oliver Packaging & Equipment Company
511 Sixth Street NW • Grand Rapids, MI 49504

(800) 253-3893
www.oliverquality.com

WARRANTY PROCEDURE

1. If a problem should occur, either the dealer or the end user must contact the Parts and Service Department and explain the problem.
2. The Parts and Service Manager will determine if the warranty will apply to this particular problem.
3. If the Parts and Service Manager approves, a Work Authorization Number will be generated, and the appropriate service agency will perform the service.
4. The service dealer will then complete an invoice and send it to the Parts and Service Department at Oliver Products Company.
5. The Parts and Service Manager of Oliver Packaging and Equipment Company will review the invoice and returned parts, if applicable, and approve for payment.



Oliver Packaging & Equipment Company
511 Sixth Street NW • Grand Rapids, MI 49504

(800) 253-3893
www.oliverquality.com

RETURNED PARTS POLICY

This policy applies to all parts returned to the factory whether for warranted credit, replacement, repair or re-stocking.

Oliver Packaging and Equipment Company requires that the customer obtain a Return Material Authorization (RMA) number before returning any part. This number should appear on the shipping label and inside the shipping carton as well. All parts are to be returned prepaid. Following this procedure will insure prompt handling of all returned parts.

To obtain an RMA number contact the Repair Parts Department toll free at (800) 253-3893.

Parts returned for re-stocking are subject to a **RE-STOCKING CHARGE**.

Thank you for your cooperation,

Repair Parts Manager
Oliver Packaging and Equipment Company