



Walker, Michigan, U.S.A. 49534-7564

USER'S OPERATING AND INSTRUCTION MANUAL

SUPER-12 AIR BAGGER

BREAD BAGGER



Oliver Packaging and Equipment Company
3236 Wilson DR NW Walker, MI 49534

(800) 253-3893
www.oliverquality.com

OPERATOR'S MANUAL

SAFETY INSTRUCTIONS

INSTALLATION ON SLICER, BAG SELECTION

MAINTENANCE & TROUBLE SHOOTING,

PARTS LISTS



SUPER 12 HORIZONTAL AIRBAGGER

"Shown with Optional Stand"



ATTENTION



ALL OPERATORS

**DO NOT INSTALL, OPERATE OR DO MAINTENANCE OF THIS EQUIPMENT WITHOUT READING THE MANUAL.
PROTECT YOURSELF AND OTHERS BY OBSERVING ALL SAFETY INFORMATION AND PROCEDURES. FAILURE TO
COMPLY WITH INSTRUCTIONS COULD RESULT IN INJURIES AND/OR PROPERTY DAMAGES.**

SAFETY DEPENDS ON YOU!



Trademark(s) owned by Bloemhof Industries Ltd.

Toll Free 1-800-253-3893
Oliver Packaging and Equipment Co
3236 Wilson Dr NW, Walker, MI 49534



Oliver Packaging and Equipment Company
3236 Wilson DR NW Walker, MI 49534

(800) 253-3893
www.oliverquality.com

WELCOME TO BLOEMHOF

The **SUPER 12 HORIZONTAL AIRBAGGER** will be a welcome addition to your shop because it was designed to reduce the labour intensive and tedious bagging operations. We invite you to study the instructions in order to obtain maximum performance, safety and satisfaction from this outstanding machine.

PLEASE READ THE SAFETY INSTRUCTIONS PRIOR TO USING YOUR
NEW BLOEMHOF SUPER 12 HORIZONTAL AIRBAGGER

SAFETY INSTRUCTIONS

WARNING! *DO NOT INSTALL OPERATE OR MAINTAIN THIS EQUIPMENT WITHOUT READING AND UNDERSTANDING THIS MANUAL*

SAFETY DEPENDS ON YOU!

WARNING! ELECTRICAL SHOCK CAN KILL

- Install equipment in accordance with the all national and local electrical codes.
- Improper connection of the equipment grounding conductor and line voltage can result in a risk of electrical shock and / or damage to equipment, (such damages are not covered by warranty).
- Consult with a qualified electrician and / or service person to ensure that the outlet is properly grounded. Only a qualified electrician can modify the electrical cord and / or plug-in provided.
- Disconnect machine from electrical supply source before performing any and all maintenance.



Oliver Packaging and Equipment Company
3236 Wilson DR NW Walker, MI 49534

(800) 253-3893
www.oliverquality.com

GENERAL SAFETY INSTRUCTIONS

1. **READ** the Operators Manual carefully. Be thoroughly familiar with the controls and the proper use of the equipment.
2. **ONLY PERSONS** well acquainted with these rules for safe operation should be allowed to use this machine.
3. **Do not** wear loose clothing, scarves, or neckties. These items may become caught in moving parts and result in personal injury.
4. **VISUALLY** inspect machine prior to starting motor. Ensure all safety guards, covers and devices are in position and in good condition. Keep hands, hair, clothing and tools away from rollers, V-belts, conveyor belts and all other moving parts when starting, operating or repairing equipment. Do not disconnect Safety Bar or render it inoperable by tying or taping it in a fixed position.
5. **DISCONNECT** machine from power supply before performing servicing, maintenance, or cleaning. In some cases it may be necessary to remove safety guards to perform required maintenance. Immediately replace guards before placing the machine into service.
6. **TURN OFF** machine control before unplugging. Do not unplug machine and do not attempt to move the machine by pulling cord.
7. **DO NOT** operate machine when children are present and disconnect power supply when unattended.
8. **STAY ALERT!** Watch what you are doing and use common sense. Do not use the machine when you are tired, distracted or under the influence of drugs, alcohol or heavy medication.
9. **MOUNTING SUPER 12 ON SLICER OR TABLE** make sure bracket is securely fastened to slicer or table. When positioning mini-vert on bracket, make sure it is properly positioned and the clamping bolt is securely fastened.



INSTALLATION - BAG SELECTION & OPERATION

The SUPER 12 Horizontal Airbagger is ready for use once uncrated.

PRODUCT GUIDES

The product guides should be adjusted relative to the width of the product being bagged, and should always be positioned to guide the product down the center of the platform, into the center of the bag.

On the BLOEMHOF SUPER 12 Horizontal Airbagger the product guide adjustment can be made on both guides. The long product guides can be adjusted by loosening the clamp knob at the back of the product guide. Locate desired position then tighten plastic knob. Make sure product guide is seated square at FRONT OF LOADING PLATFORM and is latched at the back of the loading platform.

- Once the adjustments have been made on the product guides and wings for the appropriate product width and height, turn on the blower by positioning the toggle switch in the up position.

WING ADJUSTMENTS

Some wing styles will allow for height adjustment. In order to allow for proper product entry, this wing adjustment will be made slightly higher than the product being bagged, is tall. Loosen black knob on wing and adjust height accordingly.

WING INTERCHANGE

The wings on the BLOEMHOF SUPER 12 Horizontal Airbagger are designed for quick interchange should other styles be required or preferred. When replacing wing sets, make sure matching style wings are being used. Remove spring from hook and pull wing assembly up and off pivot pin. To install a new wing set, position wing assembly on pivot pin and reattach spring to the hook.

CAUTION! DO NOT STRETCH SPRING WHILE REMOVING FROM HOOK OR DURING INSTALLATION.

BAG INSTALLATION

The BLOEMHOF SUPER 12 Horizontal Airbagger is designed to use standard wicketed bakery bags that are available from all major plastic bag suppliers. To install a bag pack, first remove all cardboard pieces from the pack and lower the table to the lowest position with the adjustment handle. Place bags on table and insert wire or plastic wicket into the appropriate slotted holes. The top of the wicket must be positioned into the slot on the air-flow funnel. Once this has been located, lower the table handle in order to raise and spring tension the table.

The table is held in position and tensioned with a spring wire which is attached to the table handle. This tension should be enough to hold the table in the up position. We recommend that when the table handle is pushed down (table comes up) and the plastic bags make contact with the air funnel, the handle can be positioned in the next lowest locator hole, found on the



side of the bagger body. The tension should be sufficient to hold up the table containing a pack of bags and the weight of the product being bagged.

CAUTION!

TOO MUCH TENSION WILL MAKE IT HARD TO REMOVE THE BAGS FROM THE BAG PACK. IT WILL ALSO RIP THE LIP OF THE BAG AND MAY DISTORT THE TENSION SPRING.

Once the bag has inflated, insert the product into the bag with a steady hand motion and continue this motion until the bag has been released from the wire wicket. The next bag will automatically inflate. When packaging tray buns or similar products, place them onto the platform between the product guides, then stack or arrange them as required. Now push the grouped product into the bag with one steady motion.

MULTI-PURPOSE STAND

The stand for the BLOEMHOF SUPER 12 Horizontal Airbagger is designed to allow for use of the bagger in the HORIZONTAL and VERTICAL position. For bulk bagging (use in vertical position) simply lift bagger up at back end. To reposition bagger for horizontal use, carefully push down on back of bagger and guide to stand.

CAUTION! DO NOT ALLOW BAGGER TO FREELY COLLAPSE ONTO THE STAND.

BULK DROP LOADING

Install the bag stop supplied by positioning on top of table (PRIOR TO THE INSTALLATION OF THE BAGS) and installing both ¼" carriage bolts from the top and installing plastic knobs underneath table. Adjust bag stop relative to the length of plastic bag being used. Tighten plastic knobs.

Depending on the type of product being bagged, bulk bagging may be accomplished without the use of any wings. If this is the case, the wings can be removed.

BAG SPECIFICATIONS

BASIC BAGS

The SUPER 12 Horizontal Airbagger will be for either polypropylene or polyethylene bags. These bags must be designed with an extended bottom lip so that they can be mounted on a wire wicket. Industry specifications vary, however approximately 250 bags per wicket, work well with our machines.

- Bags with perforated holes may not blow up properly.

BAG WIDTH SELECTION

Oversized bags will make it easier to load the product but will give a sloppy appearance. Undersized bags will give a snug appearance, but make it more difficult to load. When using any air bagger, a compromise must be made on bag width in order to make the bagging operation as quickly as possible.

In selecting bag width, use as a minimum the width and the height of the product, plus ½". Use the largest of all irregular areas when calculating bag size. Example, if your bread is 5" wide and 5" high, your bag width will be 10½".

SUPER 12 Horizontal Airbagger **minimum** bag width 5 Inches



BAG LENGTH SELECTION

The length of your product will be determined by the length of your bag plus some extra for bag closure. Normally at least 5" of bag material is required for proper bag closure. *Consult your bag supplier.*

TROUBLE SHOOTING

1. BAGS DO NOT OPEN

Make sure:

- Unit is plugged into 115v supply
- Toggle switch is on
- Bags are not upside down on table
- Wire wicket is in air-funnel slot
- Lower lip on bag is free to open
- Table is in upright position

2. Wings do not enter bag

Make sure:

- Product guides are evenly divided from center on loading platform
- Wing selection is suitable for product

3. Bagger does not stay vertical

Make sure:

- Lift cylinder is working properly, replace if necessary



PREVENTATIVE MAINTENANCE SCHEDULE

WARNING, MAKE SURE TO ALWAYS DISCONNECT THE EQUIPMENT FROM THE POWER SUPPLY BEFORE PERFORMING ANY SERVICING, MAINTENANCE, AND CLEANING!

DAILY

1. Pull down loading table and remove pack of plastic bags.
2. Remove any plastic residue or crumbs from air funnel.
3. Remove product guides and clean loading platform.
4. **CLEANING MACHINE** Use a brush, air hose or damp rag. **Do not spray machine down with water!**

MONTHLY

Lubricate product guide clamping bolt threads with grease or anti-seize compound.

EVERY 6 MONTHS

1. Remove cover plate from bottom of bagger and inspect blower.
2. Remove all foreign material from squirrel cage fan and re-install cover.
3. Inspect electrical supply cable for damage and replace if damaged.
4. Check strain relief bushing and tighten if loose. Replace if damaged

PARTS LIST AS PER DIAGRAM

When ordering parts please make sure to have the following information available:

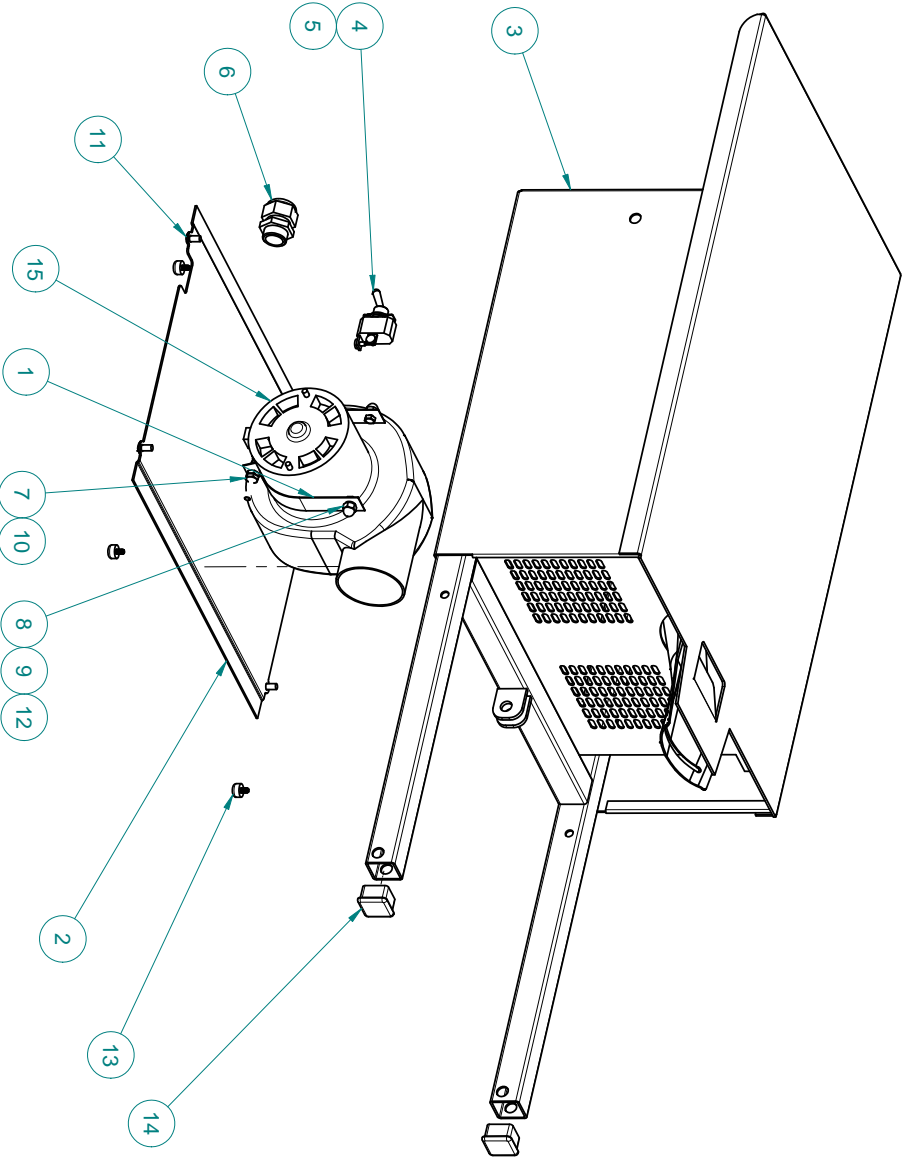
- The bagger model
- Serial Number (Back panel of the machine, found on the name plate)
- Part Number and Quantity (If unsure please contact our Parts Person for help)

You can either place your order by phone at 1-800-253-3893 option 2 or fax at 616-456-7791

0	TOOL NAME	NUMBER
---	-----------	--------

CHANGE C11771 - 250000

ITEM	PART NUMBER	DESCRIPTION	QUAN.
------	-------------	-------------	-------



Item Number	Part Number	Description	Qty
1	1170-0003	STRAP-MOTOR	2
2	1171-10359	COVER-HOUSING	1
3	1171-1153	HOUSING-BAGGER	1
4	5757-3069	SWITCH-TOGGLE 15A-125 1/2 HP	1
5	5757-3070	PLATE-TOGGLE SWITCH ON/OFF	1
6	5765-1121	STRAIN RELIEF M20 X 1.5	1
7	5832-0578	NUT - HEX MACHINE #10-24 STST	2
8	5832-0585	NUT - ACORN 3/16 (10-24) STST	2
9	5843-1230	SCREW-HEX HD #10-24 X 1/4, STST	2
10	5843-1240	SCREW-HEX HD #10-24 X 2, STST	1
11	5843-5384	SCREW-TRUSS HEAD 10-24 x 3/8 STST	4
12	5851-9355	WASHER - #10 STST SPRING LOCK	2
13	5902-0007	BUMPER-RUBBER 6-32 THREAD	6
14	5902-2125	CAP-SQUAR RUBBER 1 X 1 X .06 TUBE	2
15	6310-5018	BLOWER-1/40 HP, 90 CFM	1

LTR	CHANGE	DATE	BY	EC NO.	LTR	CHANGE	DATE	BY	EC NO.



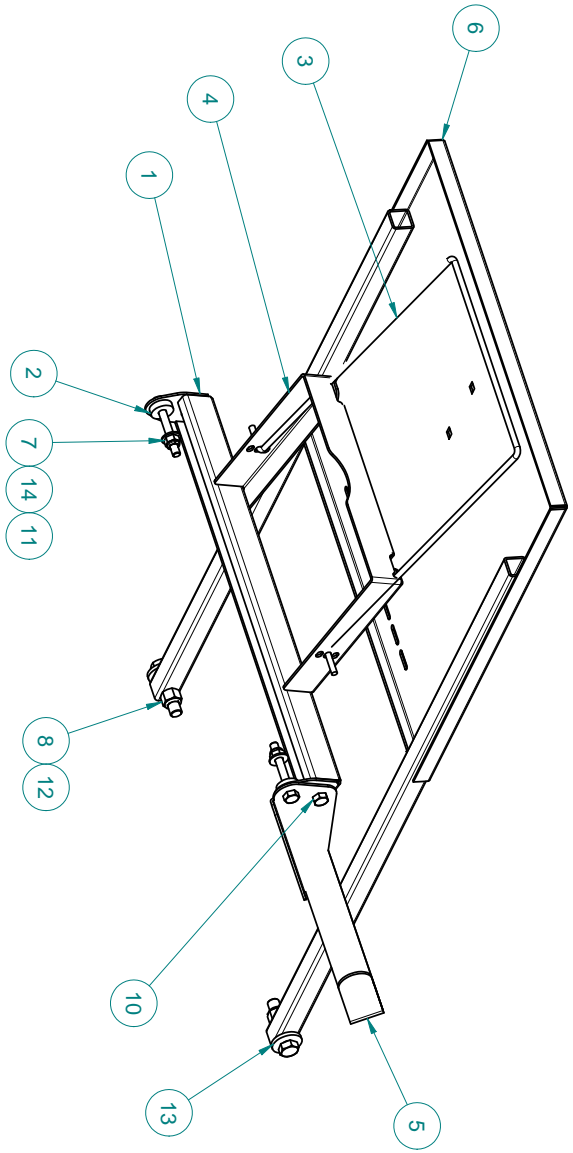
WALKER, MICHIGAN, U.S.A. 49534-7564
 THIS DRAWING AND ALL PROPRIETARY RIGHTS AND CONCEPTS HEREIN ARE THE EXCLUSIVE PROPERTY OF OLIVER PACKAGING AND EQUIPMENT COMPANY AND ARE NOT TO BE REPRODUCED OR TRANSMITTED IN ANY FORM OR BY ANY MEANS, ELECTRONIC OR MECHANICAL, INCLUDING PHOTOCOPYING, RECORDING, OR BY ANY INFORMATION STORAGE AND RETRIEVAL SYSTEM, WITHOUT PERMISSION OF OLIVER PACKAGING & EQUIPMENT COMPANY.

NAME: **ELECTRICS-1/60/115 W/HOUSING**
 MATL. SEE LIST
 DRAWN BY: **TELECZAN** DATE: **11-15-16** SCALE: _____
 REMOVE SHARP EDGES
 DIMENSIONAL TOLERANCES UNLESS SPECIFIED FRACTIONAL ± .004 DECIMAL ± .005 ANGULAR ± 1°
 DO NOT SCALE THIS DRAWING

CHANGE C11771 - 25001


0	TOOL NAME	NUMBER
---	-----------	--------

ITEM	PART NUMBER	DESCRIPTION	QUAN.
------	-------------	-------------	-------



Item Number	Part Number	Description	Qty
1	1171-0001	BRACE-TABLE SPRING CROSS	1
2	1171-0003	SPACER	2
3	1171-11081	SPRING-TABLE	1
4	1171-11082	ARMS-TABLE SPRING	1
5	1171-11085	HANDLE-SPRING	1
6	1171-1155	WELDMENT-TABLE ASSEMBLY	1
7	5831-9087	NUT-ELASTIC FL HT, 1/4-20 STST	5
8	5831-9089	NUT-ELASTIC FL HT, 3/8-16 STST	2
9*	5843-1002	SCREW - HEX HD 1/4-20 X 5/8 STST	2
10	5843-1003	SCREW - HEX HD 1/4-20 X 3/4 STST	1
11	5843-1009	SCREW - HEX HD 1/4-20 X 2 STST	2
12	5843-1058	SCREW - HEX HD 3/8-16 X 2" STST	2
13	5851-8140	WASHER-FLAT 3/8 X 1 X 1/8 THK PLATED	2
14	5851-9304	WASHER - FLAT 1/4" 18-8 STST	5

LTR	CHANGE	DATE	BY	EC NO.	LTR	CHANGE	DATE	BY	EC NO.

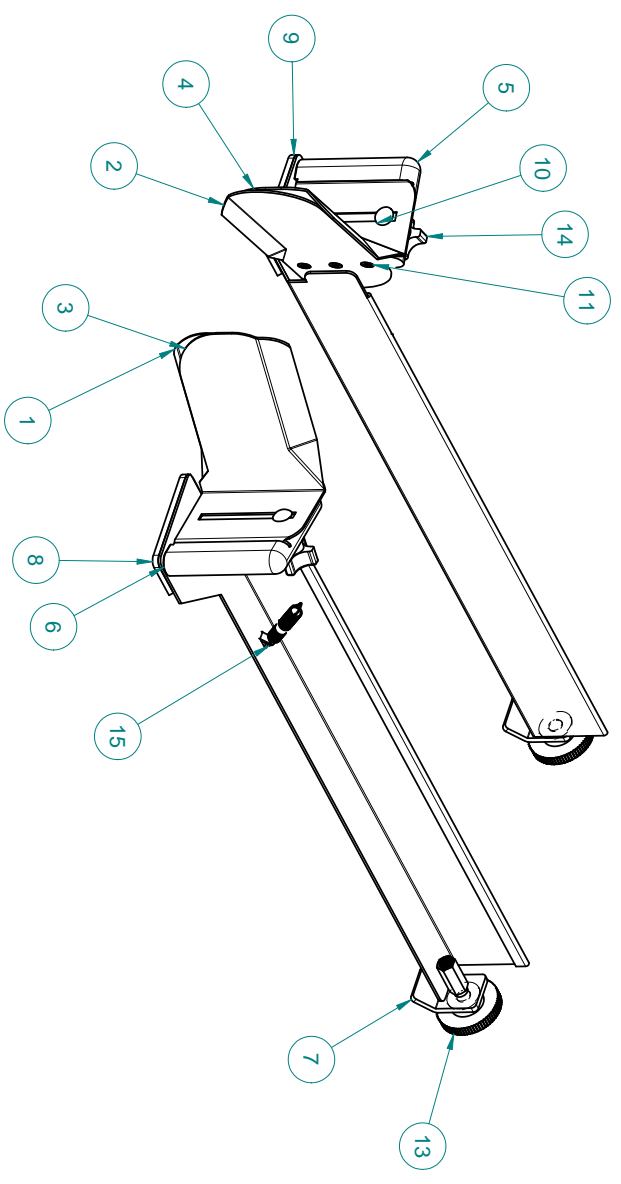

 WALKER, MICHIGAN, U.S.A. 49534-7564
 THIS DRAWING AND ALL PROPRIETARY RIGHTS AND CONCEPTS HEREIN ARE THE EXCLUSIVE PROPERTY OF OLIVER PACKAGING AND EQUIPMENT COMPANY AND ARE NOT TO BE REPRODUCED OR TRANSMITTED IN ANY FORM OR BY ANY MEANS, ELECTRONIC OR MECHANICAL, INCLUDING PHOTOCOPYING, RECORDING, OR BY ANY INFORMATION STORAGE AND RETRIEVAL SYSTEM, WITHOUT PERMISSION OF OLIVER PACKAGING & EQUIPMENT COMPANY.

NAME: ASSEMBLY-ADJUSTABLE TABLE
 MATL: SEE LIST
 MATL NO.: _____ FINISH: _____
 DRAWN BY: TELICZAN DATE: 11-15-16 SCALE: _____
 REMOVE BIRDS & SHARP EDGES DO NOT SCALE THIS DRAWING
 DIMENSIONAL TOLERANCES UNLESS SPECIFIED FRACTIONAL ± .164 DECIMAL ± .005 ANGULAR ± 1

C1171 - 25002

0	TOOL NAME	NUMBER
---	-----------	--------

CHANGE	ITEM	PART NUMBER	DESCRIPTION	QUAN.
--------	------	-------------	-------------	-------



Item Number	Part Number	Description	Qty
1	1171-10352	BASE-LEFT WING	1
2	1171-10353	BASE-RIGHT WING	1
3	1171-10354	RISER-LEFT WING	1
4	1171-10355	RISER-RIGHT WING	1
5	1171-11074	BLOCK-RH WING	1
6	1171-11075	BLOCK-LH WING	1
7	1171-11079	CLAMP	2
8	1171-1178	WELDMENT-LH PRODUCT GUIDE	1
9	1171-1179	WELDMENT-RH PRODUCT GUIDE	1
10	5804-1727	BOLT - CARRIAGE 1/4-20 X 1-1/4" STST	2
11	5841-9323	SCREW-10-24 X 1 STST THREAD CUTTING	6
12*	5851-9306	WASHER - FLAT 3/8" 18-8 STST	2
13	5911-7027	KNOB-KNRLD 1-7/8"DIA.3/8-16 STUD	2
14	5911-7034	KNOB-4 PRONG	2
15	7022-4003	SPRING-EXT 3/8X.031X2-1/4 MW	2

LTR	CHANGE	DATE	BY	EC NO.	LTR	CHANGE	DATE	BY	EC NO.



WALKER, MICHIGAN, U.S.A. 49534-7564
 THIS DRAWING AND ALL PROPRIETARY RIGHTS AND CONCEPTS HEREIN ARE THE EXCLUSIVE PROPERTY OF OLIVER PACKAGING AND EQUIPMENT COMPANY AND ARE NOT TO BE REPRODUCED OR TRANSMITTED IN ANY FORM OR BY ANY MEANS, SUCH AS RIGHTS WITHOUT PERMISSION OF OLIVER PACKAGING & EQUIPMENT COMPANY.

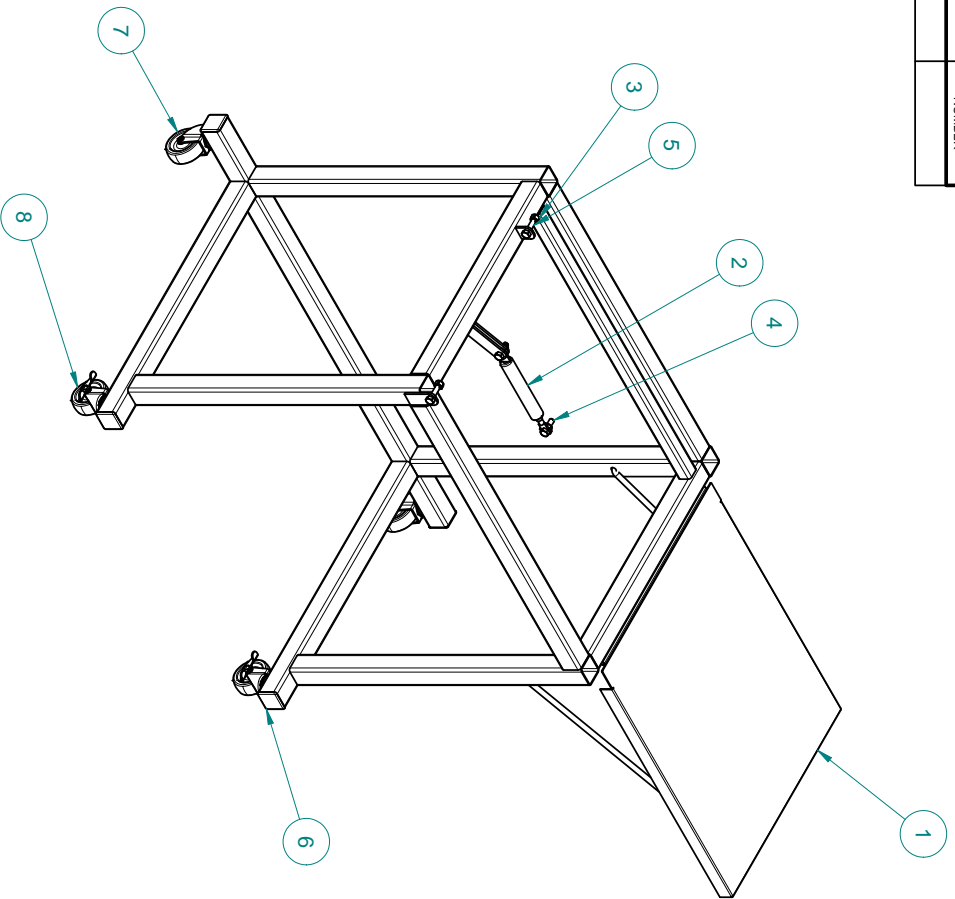
NAME: ASSEMBLY-GUIDES AND WING
 PART: SEE LIST
 DRAWN BY: TELICZAN DATE: 11-15-16 SCALE: _____
 FINISH: _____
 REMOVE BARRS & SHARP EDGES
 DIMENSIONAL TOLERANCES UNLESS SPECIFIED FRACTIONAL ±.164 DECIMAL ±.005 ANGULAR ±1

0	TOOL NAME	NUMBER
---	-----------	--------

CHANGE

C1171 - 25004

ITEM	PART NUMBER	DESCRIPTION	QUAN.
------	-------------	-------------	-------



Item Number	Part Number	Description	Qty
1	1171-1163	WELDMENT-SUPER 12 BAGGER STAND	1
2	1171-1177	SUPPORT-GAS CHARGED LIFT	1
3	5831-9088	NUT-ELASTIC 5/16-18 STST	8
4	5843-1030	SCREW- HEX HD 5/16-18 X 1 STST	2
5	5843-1032	SCREW-STST HEX HD 5/16-18 X 1-1/2	2
6	5902-2126	CAP-SQUARE RUBBER 1-1/2"	4
7	5902-2323	CASTER-SWVEL 2" 5/16-18	2
8	5902-2324	CASTER-SWVEL 2" 5/16-18 W/ BRAKE	2

LTR	CHANGE	DATE	BY	EC NO.	LTR	CHANGE	DATE	BY	EC NO.



WALKER, MICHIGAN, U.S.A. 49534-7564

THIS DRAWING AND ALL PROPRIETARY RIGHTS AND CONCEPTS HEREIN ARE THE EXCLUSIVE PROPERTY OF OLIVER PACKAGING AND EQUIPMENT COMPANY AND ARE NOT TO BE REPRODUCED OR TRANSMITTED IN ANY FORM OR BY ANY MEANS, WITHOUT THE WRITTEN PERMISSION OF OLIVER PACKAGING & EQUIPMENT COMPANY.

NAME ASSEMBLY-SUPER 12 BAGGER STAND

MATL NO. _____ FINISH _____ SCALE _____

DRAWN BY TELICZAN DATE 12-12-16

REMOVE BURRS & SHARP EDGES DO NOT SCALE THIS DRAWING DIMENSIONAL TOLERANCES UNLESS SPECIFIED FRACTIONAL ± 1/64 DECIMAL ± .005 ANGULAR ± 1°



Oliver Packaging and Equipment Company
3236 Wilson DR NW Walker, MI 49534

(800) 253-3893
www.oliverquality.com

WARRANTY

PARTS

Oliver Packaging & Equipment Company warrants that if any part of the equipment (other than a part not manufactured by Oliver Packaging & Equipment) proves to be defective (as defined below) within one year after shipment, and if Buyer returns the defective part to Oliver Packaging & Equipment within one year, Freight Prepaid to Oliver Packaging & Equipment's plant in Grand Rapids, MI, then Oliver Packaging & Equipment, shall, at Oliver Packaging & Equipment's option, either repair or replace the defective part, at Oliver Packaging & Equipment's expense.

LABOR

Oliver Packaging & Equipment further warrants that equipment properly installed in accordance with our special instructions, which proves to be defective in material or workmanship under normal use within one (1) year from installation or one (1) year and three (3) months from actual shipment date, whichever date comes first, will be repaired by Oliver Packaging & Equipment or an Oliver Packaging & Equipment Authorized Service Dealer, in accordance with Oliver Packaging & Equipment's published Service Schedule.

For purposes of this warranty, a defective part or defective equipment is a part or equipment which is found by Oliver Packaging & Equipment to have been defective in materials workmanship, if the defect materially impairs the value of the equipment to Buyer. Oliver Packaging & Equipment has no obligation as to parts or components not manufactured by Oliver Packaging & Equipment, but Oliver Packaging & Equipment assigns to Buyer any warranties made to Oliver Packaging & Equipment by the manufacturer thereof.

This warranty **does not** apply to:

1. Damage caused by shipping or accident.
2. Damage resulting from improper installation or alteration.
3. Equipment misused, abused, altered, not maintained on a regular basis, operated carelessly, or used in abnormal conditions.
4. Equipment used in conjunction with products of other manufacturers unless such use is approved by Oliver Packaging & Equipment in writing.
5. Periodic maintenance of equipment, including but not limited to lubrication, replacement of wear items, and other adjustments required due to installation, set up, or normal wear.
6. Losses or damage resulting from malfunction.

The foregoing warranty is in lieu of all other warranties expressed or implied AND OLIVER PACKAGING & EQUIPMENT MAKES NO WARRANTY OF MERCHANTABILITY OR FITNESS FOR PURPOSE REGARDING THE EQUIPMENT COVERED BY THIS WARRANTY. Oliver Packaging & Equipment neither assumes nor authorizes any person to assume for it any other obligations or liability in connection with said equipment. OLIVER PACKAGING & EQUIPMENT SHALL NOT BE LIABLE FOR LOSS OF TIME, INCONVENIENCE, COMMERCIAL LOSS, INCIDENTAL OR CONSEQUENTIAL DAMAGES.



Oliver Packaging and Equipment Company
3236 Wilson DR NW Walker, MI 49534

(800) 253-3893
www.oliverquality.com

WARRANTY PROCEDURE

1. If a problem should occur, either the dealer or the end user must contact the Parts and Service Department and explain the problem.
2. The Parts and Service Manager will determine if the warranty will apply to this particular problem.
3. If the Parts and Service Manager approves, a Work Authorization Number will be generated, and the appropriate service agency will perform the service.
4. The service dealer will then complete an invoice and send it to the Parts and Service Department at Oliver Packaging & Equipment Company.
5. The Parts and Service Manager of Oliver Packaging and Equipment Company will review the invoice and returned parts, if applicable, and approve for payment.



Oliver Packaging and Equipment Company
3236 Wilson DR NW Walker, MI 49534

(800) 253-3893
www.oliverquality.com

RETURNED PARTS POLICY

This policy applies to all parts returned to the factory whether for warranted credit, replacement, repair or re-stocking.

Oliver Packaging and Equipment Company requires that the customer obtain a Return Material Authorization (RMA) number before returning any part. This number should appear on the shipping label and inside the shipping carton as well. All parts are to be returned prepaid. Following this procedure will insure prompt handling of all returned parts.

To obtain an RMA number contact the Repair Parts Department toll free at (800) 253-3893.

Parts returned for re-stocking are subject to a **RE-STOCKING CHARGE**.

Thank you for your cooperation,

Repair Parts Manager
Oliver Packaging and Equipment Company