



Walker, Michigan, U.S.A. 49534-7564

USER'S OPERATING AND INSTRUCTION MANUAL

MODEL 2218

ROTARY ACCUMULATOR

ROTARY ACCUMULATOR

INDEX

<u>Section Description</u>	<u>Document No.</u>	<u>Page No.</u>
SAFETY INSTRUCTIONS -----	2218S20002 -----	1-1
DESCRIPTION/SPECIFICATIONS -----	2218S20013 -----	2-1
Description -----		2-1
Specifications -----		2-1
INSTALLATION INSTRUCTIONS -----	2218S20014 -----	3-1
Accumulator Installation -----		3-1
OPERATING INSTRUCTIONS -----	2218S20015 -----	4-1
TROUBLESHOOTING -----	2218S20006 -----	5-1
The Accumulator Will Not Start (Motor is Not Humming) -----		5-1
The Accumulator Will Not Start (Motor is Humming) -----		5-1
MAINTENANCE -----	2218S20007 -----	6-1
Removing and Replacing the Rotary Table -----		6-1
Cleaning -----		6-1
PARTS ASSEMBLY -----	2218S20022 -----	7-1
Drawing -----		7-1
Parts List -----		7-2
WIRING DIAGRAM 1-60-115 -----	2218S20023 -----	8-1
WARRANTY -----	GEN 040225	
WARRANTY PROCEDURE -----	GEN 040226	
RETURNED PARTS POLICY -----	GEN 040227	

REV. 2-17-23

ROTARY ACCUMULATOR**SAFETY INSTRUCTIONS****WARNING**

MACHINE OPERATORS AND MAINTENANCE PERSONNEL MUST OBSERVE THE FOLLOWING SAFETY PRECAUTIONS. IMPROPER INSTALLATION, MAINTENANCE, OR OPERATION OF THIS EQUIPMENT COULD CAUSE SERIOUS INJURY OR DEATH.

1. Read this manual before attempting to operate your machine. Never allow an untrained person to operate or service this machine.
2. Connect the machine to a properly grounded electrical supply that matches the requirements shown on the electrical specification plate and follow all specifications of local electrical codes.
3. Disconnect and lock-out the machine from the power supply before cleaning or servicing.
4. Check and secure all covers and guards before starting the machine.
5. Observe all caution and warning labels affixed to the machine.
6. Use only proper replacement parts.
7. Do not wear loose fitting clothing or loose hair when working near this machine. Shirt tails should be tucked in.
8. Wear proper protective personal safety equipment.
9. Keep hands away from the moving parts of this machine while it is in operation.
10. In addition to these general safety instructions, please follow the more specific safety instructions in the rest of this operating instruction manual.

WARNING

DO NOT USE FOR OTHER THAN ORIGINALLY INTENDED PURPOSE.

ROTARY ACCUMULATOR

DESCRIPTION/SPECIFICATIONS

Description

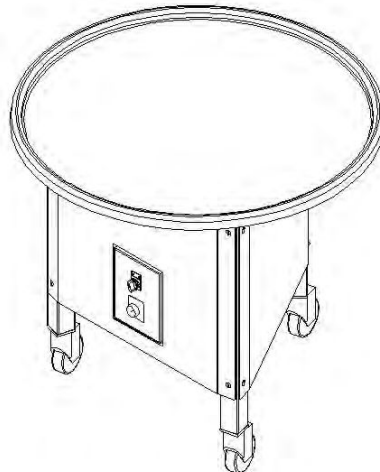
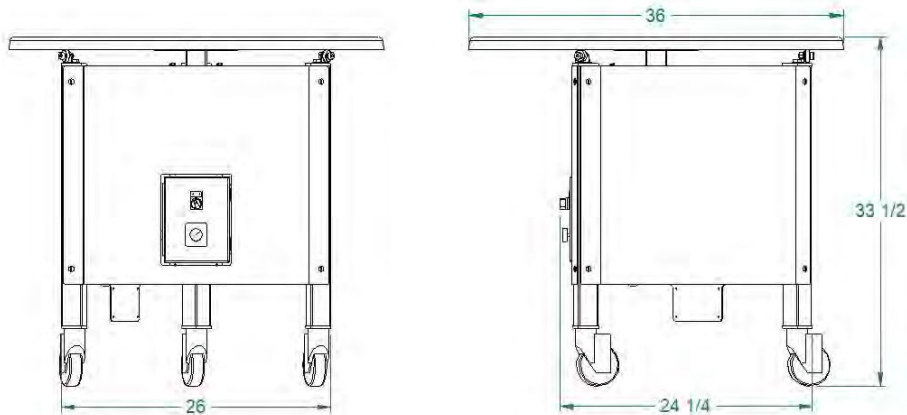
The Oliver Model 2218 Rotary Accumulator is a sturdy compact machine that is easy to operate and will provide years of operation requiring little maintenance. This machine is intended to act as a buffer in a packaging line by temporarily receiving and holding packages exiting a conveyor.

The Model 2218 Rotary Accumulator is made with a stainless and durable painted steel base and a removeable smooth plastic tabletop for easy cleaning and maintenance.

Specifications

Space Requirements:

2218 (All Dimensions are Approximate)



ROTARY ACCUMULATOR

Product Capacities:

Table is designed to support up to 25 lbs. of packages at a time.

Standard Electrical:

1 phase, 60 hz, 115VAC, 1 Amp

Standard Table Size:

36 in. diameter

Shipping Weight:

175 lbs. (approximate)

Net Weight:

98 lbs. (approximate)

ROTARY ACCUMULATOR

INSTALLATION INSTRUCTIONS

Accumulator Installation:

CAUTION

**THE ACCUMLATOR IS HEAVY, USE PROPER TECHNIQUE WHEN LIFTING.
KEEP BACK STRAIGHT, KNEES BENT, AND LIFT WITH LEGS.
USE GLOVES TO PROTECT HANDS.**

Select a location for your accumulator having a compatible electrical service available with the machine as indicated on the electrical data plate attached to the machine.

Remove the outer packaging. Using at least two people, lift the accumulator base from the packaging and set the machine onto the floor.

After the base has been moved to the desired use location (with the tabletop unassembled to get through any narrow doorways or to carry over stairs), install the tabletop by lining up the square tube on the bottom of the tabletop with the square drive hub on the base and carefully lower into position. The underside of the tabletop should contact the supporting rollers if properly installed.

Move the table to receive packaged items by rolling the machine to the desired sealer or conveyor outfeed location and lock the casters.

ROTARY ACCUMULATOR

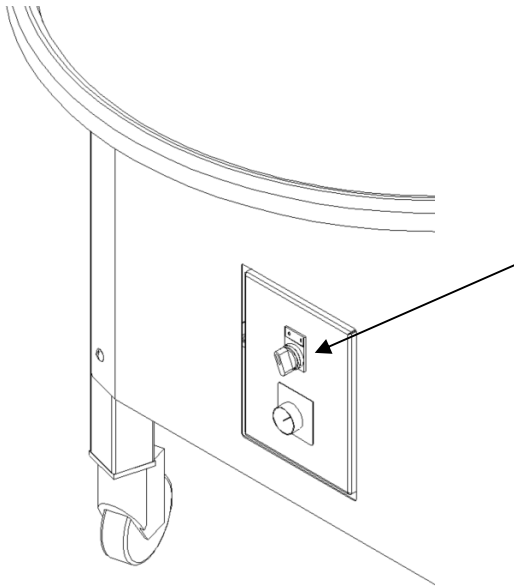
OPERATING INSTRUCTIONS

CAUTION

THE ACCUMULATOR TABLETOP ROTATES — MAKE SURE PERSONNEL AND EQUIPMENT ARE CLEAR.

DO NOT ALLOW THE TABLETOP TO RUB ON STATIONARY OBJECTS TO PREVENT WEAR AND DAMAGE.

To operate the accumulator, turn the selector switch on the base to the ON "I" position. Table speed can be varied by use of the speed control knob located below the selector switch.



Balance the rate at which the table turns and is loaded and unloaded to avoid overfilling the tabletop.

ROTARY ACCUMULATOR

TROUBLE SHOOTING

WARNING

ALWAYS DISCONNECT THE ACCUMULATOR FROM THE POWER SUPPLY BEFORE ATTEMPTING ANY TYPE OF MAINTENANCE TASK.

The Accumulator Will Not Start (Motor Is Not Humming)

- The machine is not plugged in.
- There is no power at the outlet. (Check by plugging in a small working appliance, such as a lamp. Check to see if a circuit breaker has tripped. If the circuit breaker has not tripped and the circuit is still not working have a qualified electrician check the circuit.)
- The ON/OFF switch is in the off “0” position. Turn the selector switch to the on “1” position.
- The speed may be set too low. Turn the speed control clockwise to increase table speed.
- The problem is somewhere else in the electrical system of the machine. (Have a qualified electrician find and repair the problem.)

The Accumulator Will Not Start (Motor Is Humming)

CAUTION

**DO NOT ALLOW THE MOTOR TO HUM WITHOUT STARTING.
OVERHEATING CAN PERMANENTLY DAMAGE THE MOTOR.**

- The drive system is binding. (Have a qualified service agent check for defective bearings or other restrictions to free movement.)
- There is mechanical interference between other parts of the accumulator. (Have a qualified service agent evaluate the machine for adjustment or replacement of defective parts.)
- The motor has failed. (Have it checked by a qualified electrician.)

ROTARY ACCUMULATOR

MAINTENANCE

WARNING

ALWAYS UNPLUG THE ACCUMULATOR BEFORE PERFORMING ANY TYPE OF MAINTENANCE TASK.

Removing and Replacing the Rotary Tabletop

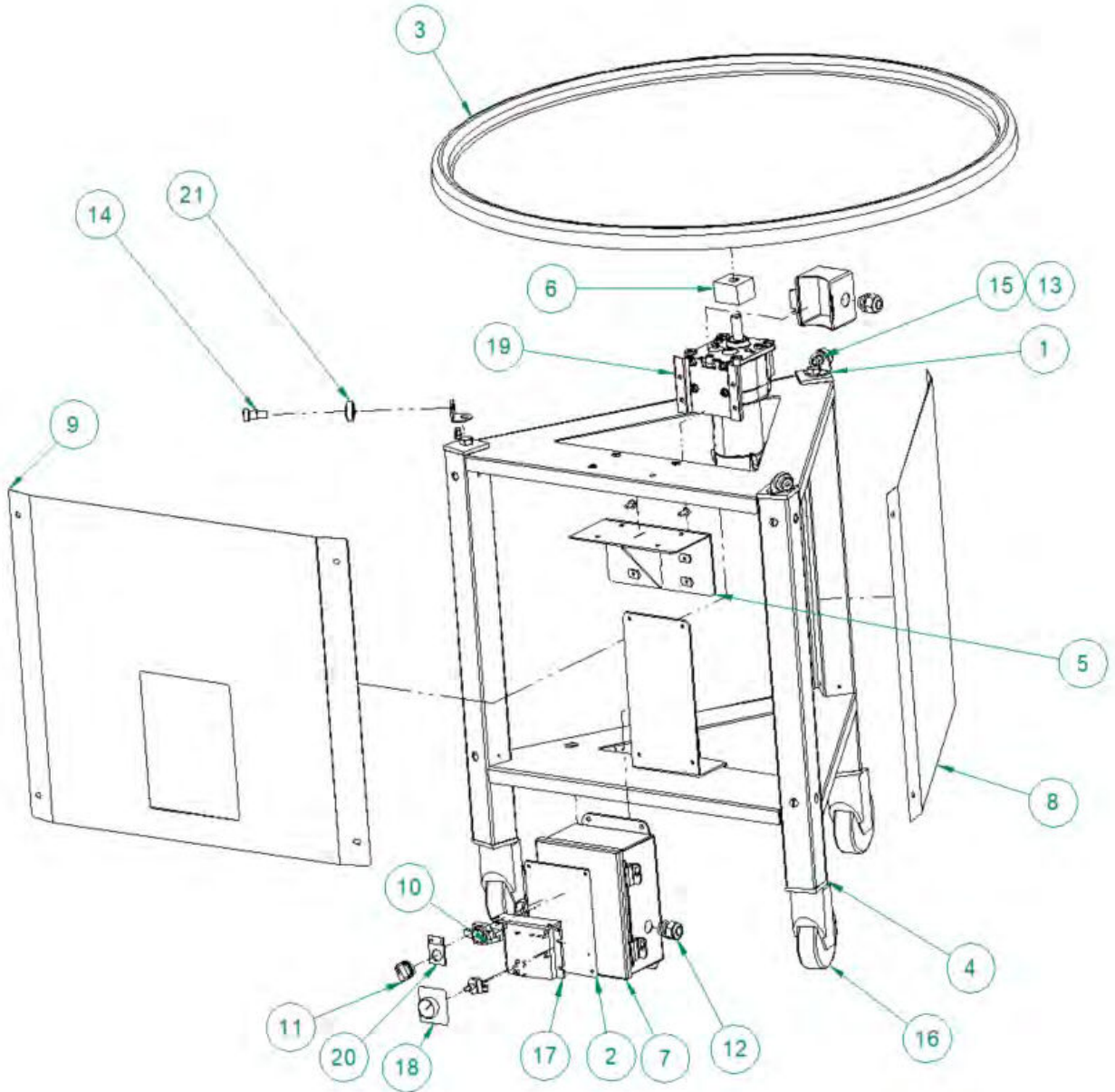
To remove the rotary tabletop, pull straight up and off the base unit. To replace the rotary tabletop, line up the square tube on the bottom of the tabletop with the square drive hub on the base and carefully lower into position. The underside of the tabletop should contact the supporting rollers if properly installed.

Cleaning

Use a cloth dampened with a mild detergent solution to clean the exterior surfaces daily or as necessary. **Do immerse or wash down the equipment.** The tabletop may be hand washed when separated from the base, but do not soak or immerse.

ROTARY ACCUMULATOR

ACCUMULATOR ASSEMBLY



FOR SERVICE PARTS CALL OLIVER PACKAGING & EQUIPMENT @ 800-253-3893

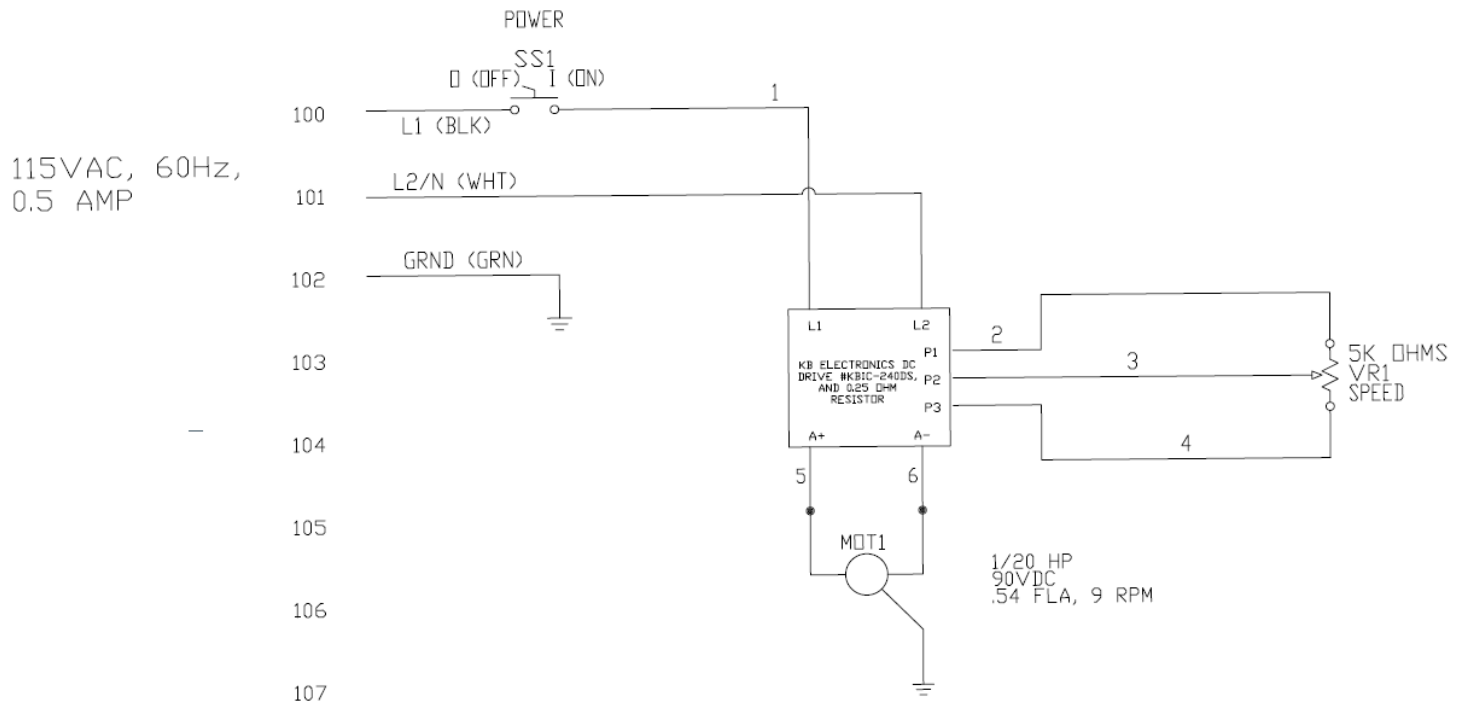
ROTARY ACCUMULATOR

Item Number	Part Number	Description	Qty
1	2218-0006	BRACKET-TABLE SUPPORT WHEEL	3
2	2218-0010	PANEL-SUB	1
3	2218-0012	TABLE-ROTARY 36"	1
4	2218-0018	WELDMENT-FRAME	1
5	2218-0019	MOUNT-MOTOR	1
6	2218-0020	BLOCK-DRIVE	1
7	2218-0021	BOX-ELECTRICAL CONTROL	1
8	2218-0022	COVER-SIDE	2
9	2218-0023	COVER-FRONT	1
10	5708-7930	BASE- N.O. CONTACT BLOCK	1
11	5708-7934	OPERATOR-SELECTOR 2 POSITION	1
12	5765-1120	STRAIN RELIEF M20 X 1.5	4
13	5832-0522	NUT-HEX 3/8 STST	3
14	5842-8950	SCREW - SHOULDER 1/2 X 1/2	3
15	5851-9359	WASHER-3/8" HELICAL SPRING LOCK STST	3
16	5902-2409	CASTER-STEM, 4" WHEEL 150LBS	3
17	6309-6010	CONTROL-DC DR ADJ HP 115/230	1
18	6309-6035	DIAL PLATE AND KNOB KIT	1
19	6310-0028	GEARMOTOR-90VDC PARALLEL SHAFT	1
20	6401-5102	LEGEND PLATE ON/OFF INTERNAT	1
21	69958	ROLLER FILM ROLL SHAFT	3

FOR SERVICE PARTS CALL OLIVER PACKAGING & EQUIPMENT @ 800-253-3893

ROTARY ACCUMULATOR

ACCUMULATOR WIRING DIAGRAM



FOR SERVICE PARTS CALL OLIVER PACKAGING & EQUIPMENT @ 800-253-3893

WARRANTY

PARTS

Oliver Packaging & Equipment Company warrants that if any part of the equipment (other than a part not manufactured by Oliver Packaging & Equipment) proves to be defective (as defined below) within one year after shipment, and if Buyer returns the defective part to Oliver Packaging & Equipment within one year, Freight Prepaid to Oliver Packaging & Equipment plant in Walker, MI, then Oliver Packaging & Equipment , shall, at Oliver Packaging & Equipment option, either repair or replace the defective part, at Oliver Packaging & Equipment expense.

LABOR

Oliver further warrants that equipment properly installed in accordance with our special instructions, which proves to be defective in material or workmanship under normal use within one (1) year from installation or one (1) years and three (3) months from actual shipment date, whichever date comes first, will be repaired by Oliver Packaging & Equipment or an Oliver Packaging & Equipment Authorized Service Dealer, in accordance with Oliver Packaging & Equipment published Service Schedule.

For purposes of this warranty, a defective part or defective equipment is a part or equipment which is found by Oliver Packaging & Equipment to have been defective in materials workmanship, if the defect materially impairs the value of the equipment to Buyer. Oliver Packaging & Equipment has no obligation as to parts or components not manufactured by Oliver Packaging & Equipment, but Oliver Packaging & Equipment assigns to Buyer any warranties made to Oliver Packaging & Equipment by the manufacturer thereof.

This warranty **does not** apply to:

1. Damage caused by shipping or accident.
2. Damage resulting from improper installation or alteration.
3. Equipment misused, abused, altered, not maintained on a regular basis, operated carelessly, or used in abnormal conditions.
4. Equipment used in conjunction with products of other manufacturers unless such use is approved by Oliver Packaging & Equipment Company in writing.
5. Periodic maintenance of equipment, including but not limited to lubrication, replacement of wear items, and other adjustments required due to installation, set up, or normal wear.
6. Losses or damage resulting from malfunction.

The foregoing warranty is in lieu of all other warranties expressed or implied AND OLIVER PACKAGING & EQUIPMENT COMPANY MAKES NO WARRANTY OF MERCHANTABILITY OR FITNESS FOR PURPOSE REGARDING THE EQUIPMENT COVERED BY THIS WARRANTY. Oliver Packaging & Equipment Company neither assumes nor authorizes any person to assume for it any other obligations or liability in connection with said equipment. OLIVER PACKAGING & EQUIPMENT COMPANY SHALL NOT BE LIABLE FOR LOSS OF TIME, INCONVENIENCE, COMMERCIAL LOSS, INCIDENTAL OR CONSEQUENTIAL DAMAGES.

WARRANTY PROCEDURE

1. If a problem should occur, either the dealer or the end user must contact the Parts and Service Department and explain the problem.
2. The Parts and Service Manager will determine if the warranty will apply to this particular problem.
3. If the Parts and Service Manager approves, a Work Authorization Number will be generated, and the appropriate service agency will perform the service.
4. The service dealer will then complete an invoice and send it to the Parts and Service Department at Oliver Packaging & Equipment Company.
5. The Parts and Service Manager of Oliver Packaging and Equipment Company will review the invoice and returned parts, if applicable, and approve for payment.



3236 Wilson Drive NW, Walker, MI 49534
800-253-3893 | www.oliverquality.com

RETURNED PARTS POLICY

This policy applies to all parts returned to the factory whether for warranted credit, replacement, repair or re-stocking.

Oliver Packaging and Equipment Company requires that the customer obtain a Return Material Authorization (RMA) number before returning any part. This number should appear on the shipping label and inside the shipping carton as well. All parts are to be returned prepaid. Following this procedure will insure prompt handling of all returned parts.

To obtain an RMA number contact the Repair Parts Department toll free at (800) 253-3893.

Parts returned for re-stocking are subject to a **RE-STOCKING CHARGE**.

Thank you for your cooperation,

Repair Parts Manager
Oliver Packaging and Equipment Company