



3236 Wilson Drive NW, Walker, MI 49534
800-253-3893 | www.oliverquality.com

723 Return Chute

Bagel-Bun Slicer Return Attachment

Model 0723-25035



Bagel Slicer Model 723
with Return Chute

KEY FEATURES

ETL and NSF approved accessory for the Classic Slicer Model 723-N

Easy-Clean, durable, bakery-white powder-coat finish on frame.
Stainless steel chute

Chute holds approximately one dozen bagels

Flip-up discharge door for efficient packaging and cleaning

Saves counter space and creates a production system for larger orders

Made in the U.S.A.



Above specifications subject to change without notice. The information contained herein is correct as of the date hereof. Recommendations or suggestions are made without guarantee or representation as to results.

012624

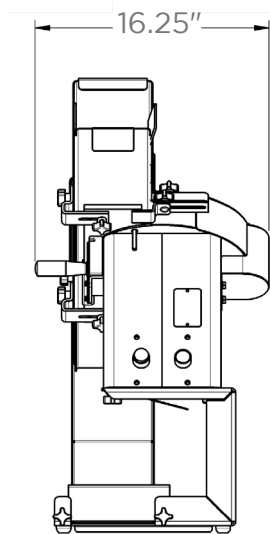
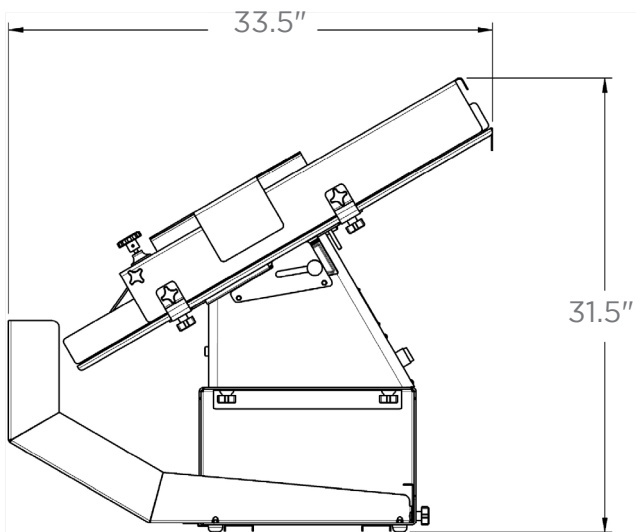


3236 Wilson Drive NW, Walker, MI 49534
800-253-3893 | www.oliverquality.com

723 Return Chute

Bagel-Bun Slicer Return Attachment

Model 0723-25035



PRODUCT SPECIFICATIONS

Electrical Standard:

NA

Maximum Bun Height: 3" (76mm)

Maximum Bun Width:

For slice through: 4-3/8" (111mm)

For hinged: 4-7/8" (124mm)

Finish:

Stainless steel contact components and food-safe materials throughout

Net Weight: 27lb (12.247kg)

Shipping Weight: 31lb (14.0614kg)

Dimensions:

H-31.5" x W-16.25" x D-33.5"

Warranty: Standard 1-year

Made in the U.S.A.



Above specifications subject to change without notice. The information contained herein is correct as of the date hereof. Recommendations or suggestions are made without guarantee or representation as to results.

012624